

ANNUAL REPORT TO THE COMMUNITY – Elting Memorial Library- Spring 2011
 [based on the State Report covering the full year of 2010]

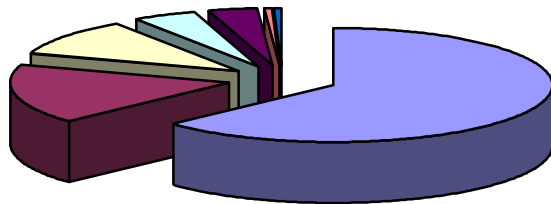
This was the first year the library operated on tax-based funding provided by the “414” vote, an immense help. (Reduced state support to the library system continues as a major challenge for all member libraries.) We opened on Sundays, a direct result of the vote, which proved very popular. We have an amazing group of volunteers and new committees to help in many ways. We offered much more programming and built a new teen area. E-book service started. Children’s story times, the summer reading program, films and much more continue. Check the events calendar on our website for a wide range of events. Our local history collection launched on-line exhibits, and more digitizing of material. The book *New Paltz Revisited* was published and is on sale.

Circulation Statistics	2010	2009
All Materials	102,735	97,891
Adult Books	43,172	40,777
Children’s Books	21,010	22,451
Adult Media (dvds, audio books, etc.)	34,491	32,456
Children’s Media (dvds, etc.)	4,062	2,207
Library Visits	93,500	88,000
Weekly Hours Open to the Public	48	45
New Library Cards Issued	654	566

- Collection holdings:** Total holdings (all materials): 77,091
- a. book collection: 54,432
 - b. films (dvd & vhs) collection: 2,785
 - c. audio books (disc and tape): 550
 - d. music cds: 1,125
 - e. other holdings (photos, pamphlets etc): 18,199
 - f. periodical subscriptions: 91

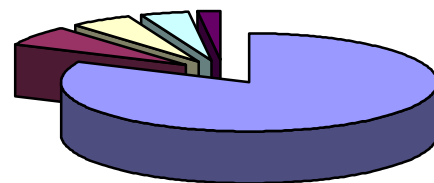
Budget \$387,000

Expenses



■ Human Resources/Staffing 63%
■ Utilities & Maintenance 17%
□ Materials (Books, Etc.) 10.5%
□ Automation, Telephone, Postage, Supplies 4.8%
■ Professional Services, Contracts, Programming 3.6%
■ Equipment/Furniture .65%
■ Miscellaneous .45%

Income



■ Tax Based Funds 82%
■ Library Fair 6.5%
□ Appeals, Assoc. Memberships, Gifts, Etc. 5.5%
□ Fines/Charges 4%
■ Interest, Fees, Rent, Etc. 2%